

【城南区】洪水ハザードマップ

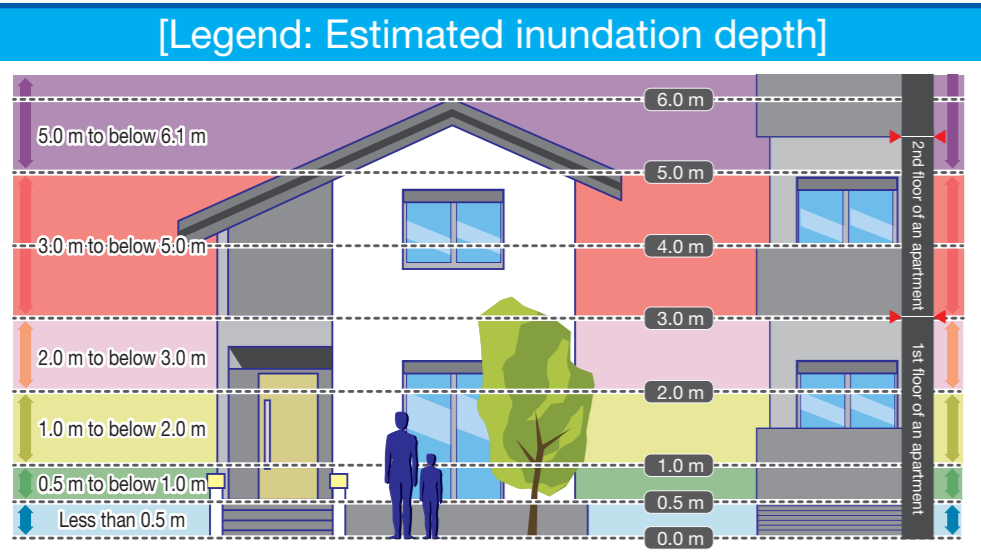
(Target river: Hiigawa River) / 【Jonan Ward】 Flood Hazard Map / 【城南区】洪涝防灾地图 / 【조난구】 홍수위험지도

Flood hazard map (Jonan Ward version)

▶ This flood hazard map shows the predicted situation of inundation from the Hiigawa River that could be caused by the maximum expected rainfall under the current conditions of river width, depth, and dams based on a simulation performed by the Fukuoka Prefectural Government.

▶ “The maximum expected rainfall” is as follows.

- Hiigawa River basin: 615 mm/6 hours



The shaded areas along rivers indicate house collapsing flood hazard areas.

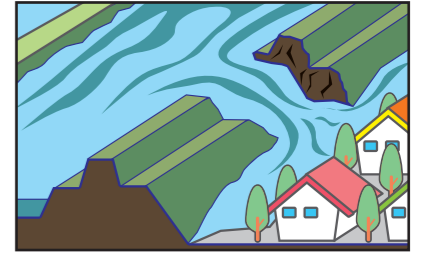
The situation of inundation changes depending on how it rains and the occurrence of flooding from small and medium-sized rivers. Therefore, please note that areas not indicated as flood hazard areas on this map could be inundated.

House collapsing flood hazard areas

There are two types of house collapsing flood hazard areas.

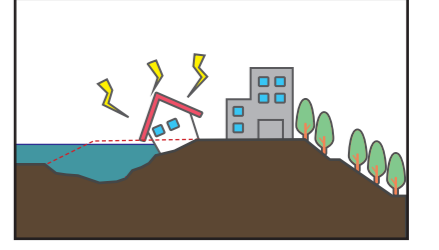
: Overflow

An estimation of areas at risk of house collapse in the event of a levee breach or the like



: Bank erosion

An estimation of areas at risk of house collapse in the event of bank erosion



What is a designated evacuation shelter?

A designated evacuation shelter is positioned as an evacuation site for residents in an emergency due to a disaster, such as a tsunami or flood, to ensure the safety of their lives.

[Temporary evacuation shelters]

Facilities that can accommodate more than 50 people, such as community centers

[Accommodation shelters]

Facilities that can accommodate more than 100 people, such as elementary and junior high schools

* Designated evacuation shelters are set up after confirming safety based on the situation of the disaster and the damage and circumstances of the facility.

Designated evacuation shelters

(Temporary evacuation shelters)

① Torikai Community Center	②
② Befu Community Center	②
③ Jonan Community Center	○
④ Jonan Gymnasium	○
⑤ Tajima Community Center	○
⑥ Nagao Community Center	②
⑦ Kanayama Community Center	○
⑧ Nanakuma Community Center	○
⑨ Jonan Civic Center	○
⑩ Katae Community Center	○
⑪ Tsutsumigaoka Community Center	○
⑫ Minami-Katae Community Center	○
⑬ Tsutsumi Community Center	○

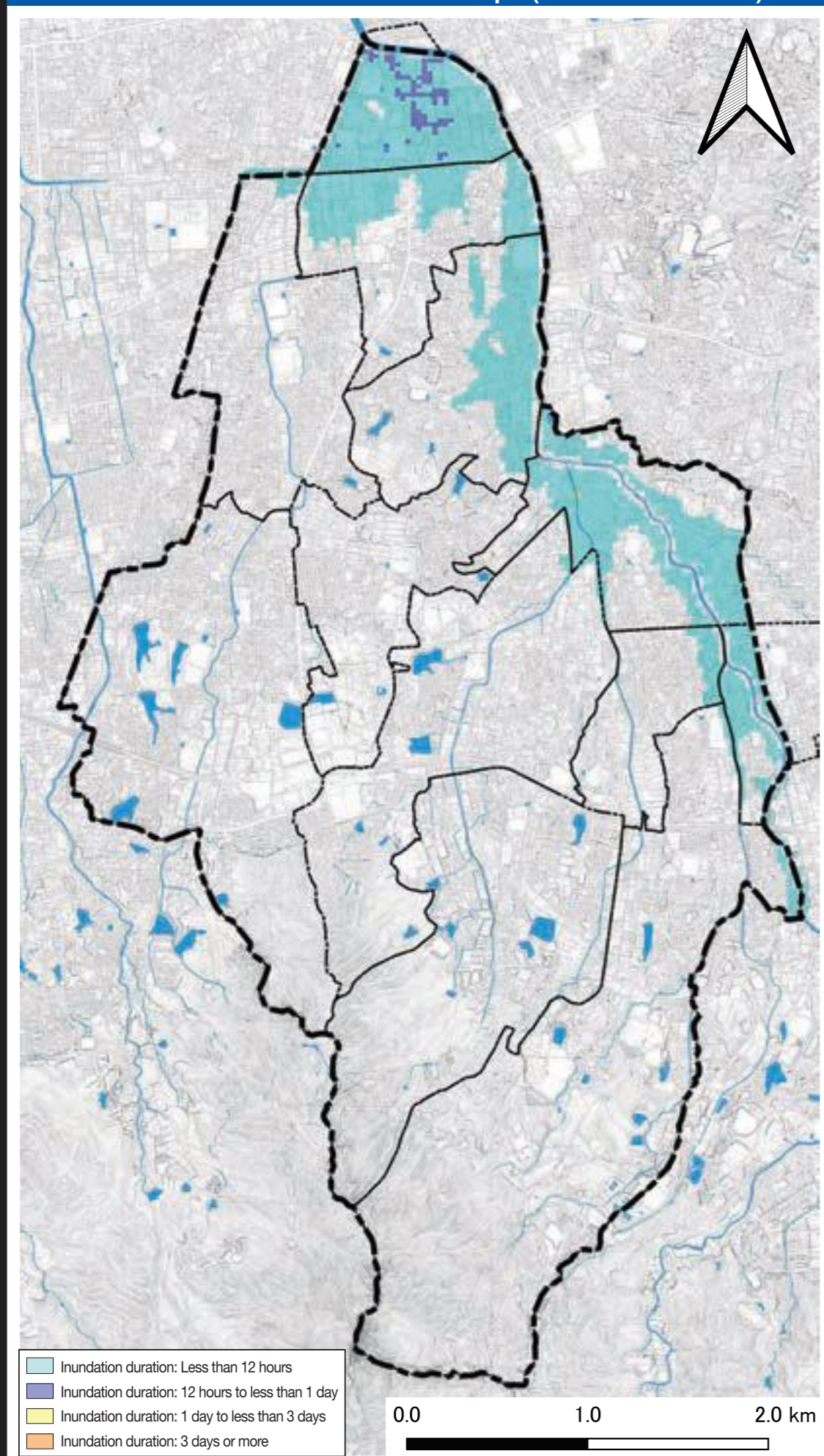
(Accommodation shelters)

① Torikai Elementary School	S ②
② Josei Junior High School	S ②
③ Befu Elementary School	○
④ Jonan Junior High School	○
⑤ Jonan Elementary School	○
⑥ Jonan Senior High School	○
⑦ Tajima Elementary School	○
⑧ Nagao Elementary School	○
⑨ Kanayama Elementary School	○
⑩ Nanakuma Elementary School	○
⑪ Katae Elementary School	○
⑫ Nagao Junior High School	○
⑬ Umabayashi Junior High School	○
⑭ Tsutsumigaoka Elementary School	○
⑮ Minami-Katae Elementary School	○
⑯ Katae Junior High School	○
⑰ Tsutsumi Elementary School	○
⑱ Hakata Technical High School	○

【Legend】

○	: Use permitted
②	: Use permitted of 2nd floor and above
S ②	: Use of 2nd floor and above of school buildings permitted
×	: Use not permitted

Inundation duration map (Jonan Ward)



【Legend】

	: Ward border		: School district
	: Designated evacuation shelter (temporary evacuation shelter)		: Designated evacuation shelter (accommodation shelter)
	: Ward office		: Major administrative agency
	: Police station		: Fire station
	: Designated emergency hospital		: Water level gauging station
	: Flood defense warehouse		: Underpass

Emergency contact

Jonan Ward General Affairs Section	092-833-4055
Fukuoka City Civic Affairs Bureau Disaster Prevention and Crisis Management Department	092-711-4056
Police	110
Fire and rescue	119
Water supply () ()	() ()
Electricity () ()	() ()
Gas () ()	() ()

0 200 400 600m
S=1:10,000